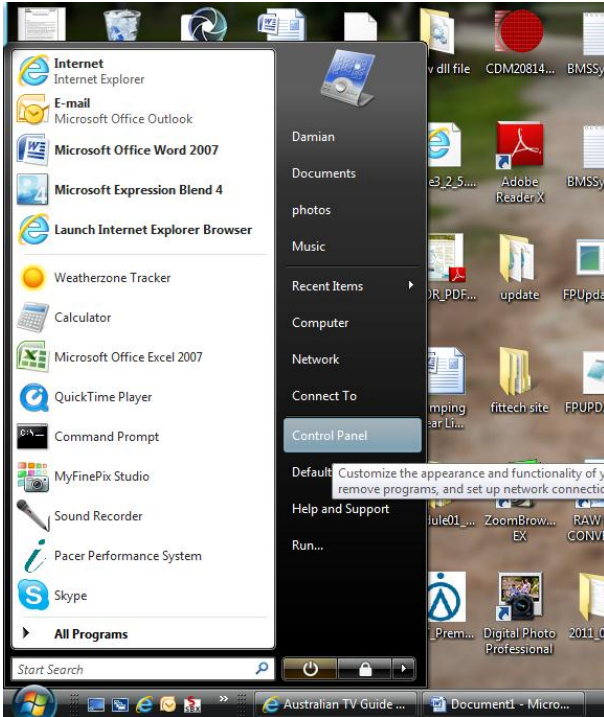


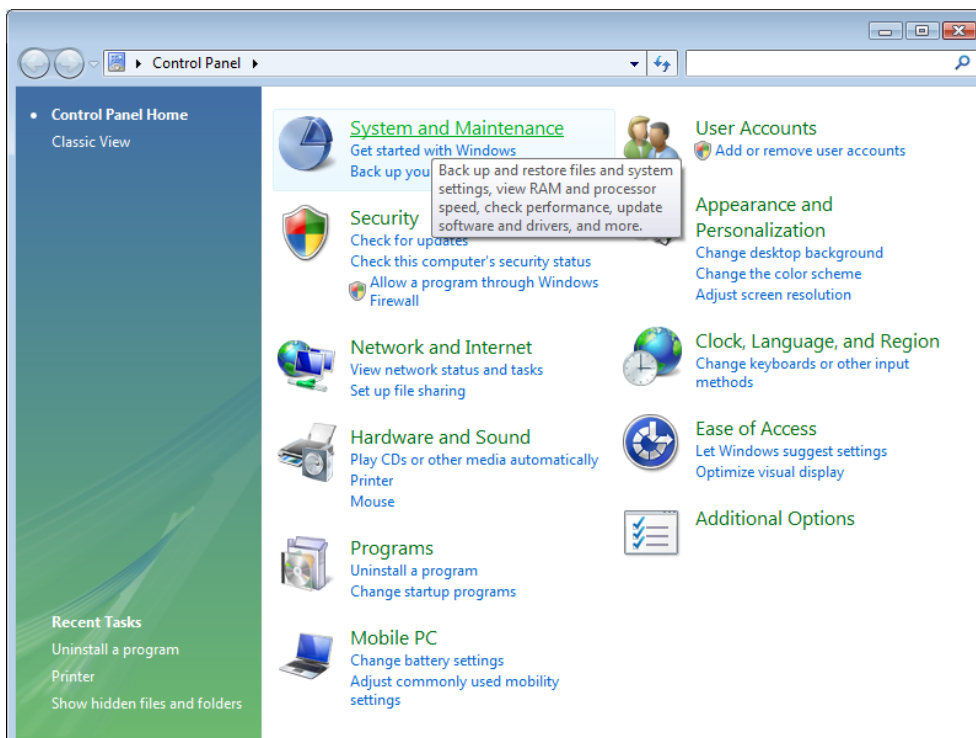
## How to reset the USB Serial COM Port for the XPV6 so that you can select it in the KMS or BMS Software.

If your Port number for XPV6 is above 20 you will not be able to connect using the BMS and KMS software. To correct this follow the steps below.

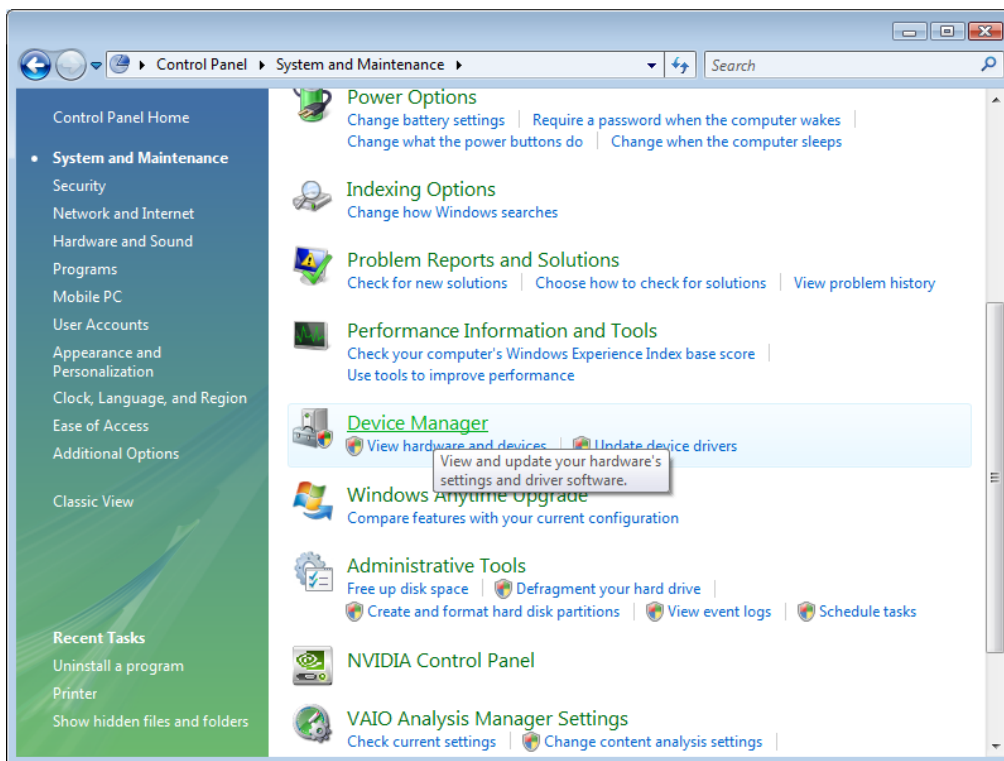
Click the Start button (windows icon bottom left of screen). Then double click Control Panel.



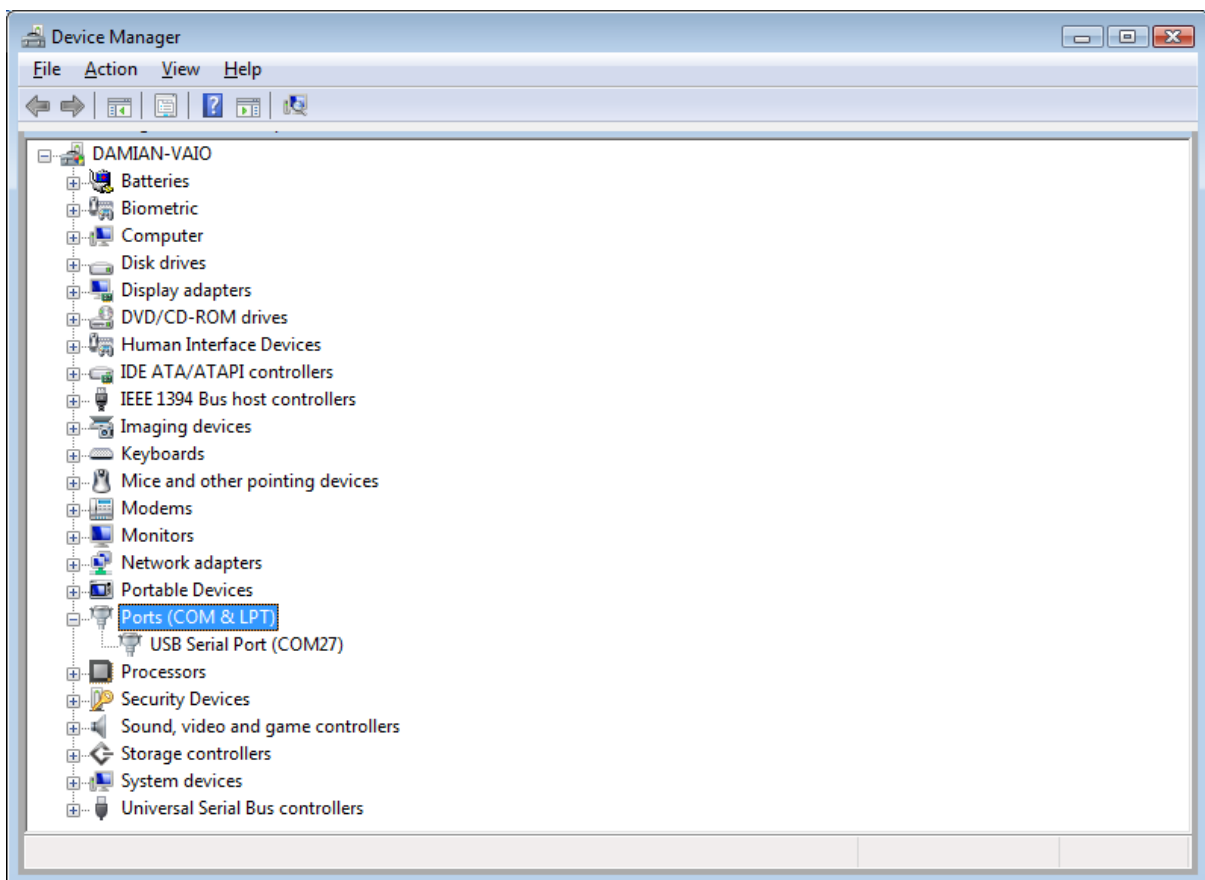
For Vista and Windows 7 double click 'System and Maintenance'



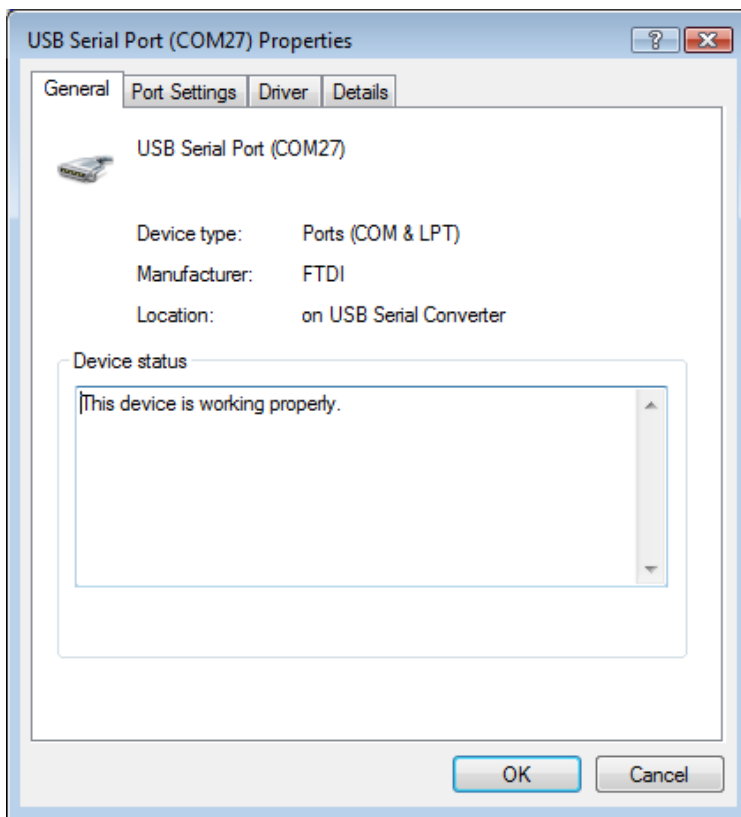
Scroll down and double click 'Device manager'



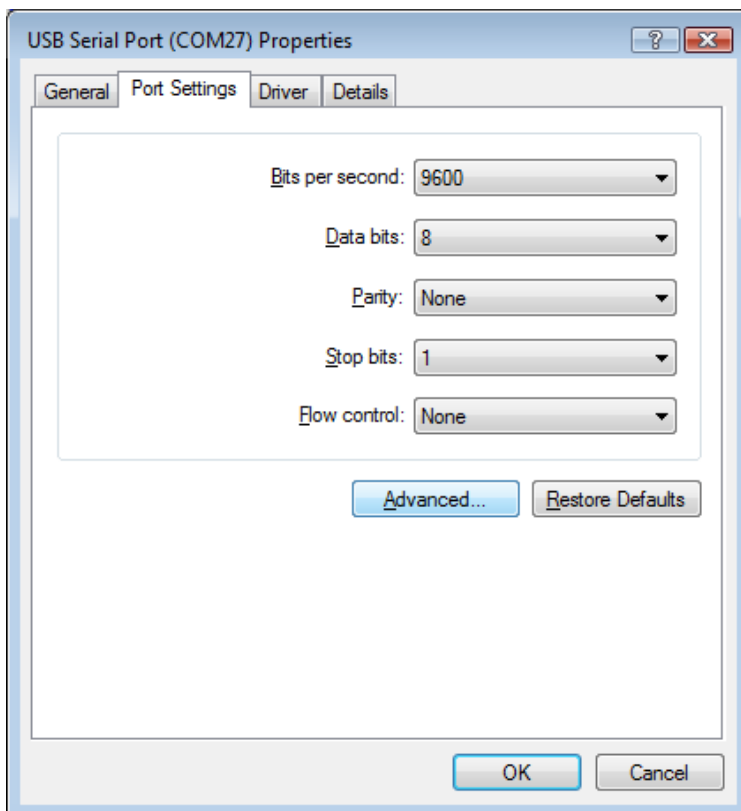
Expand 'Ports (COM & LPT)' by clicking the + symbol. Then Double Click 'USB Serial Port'



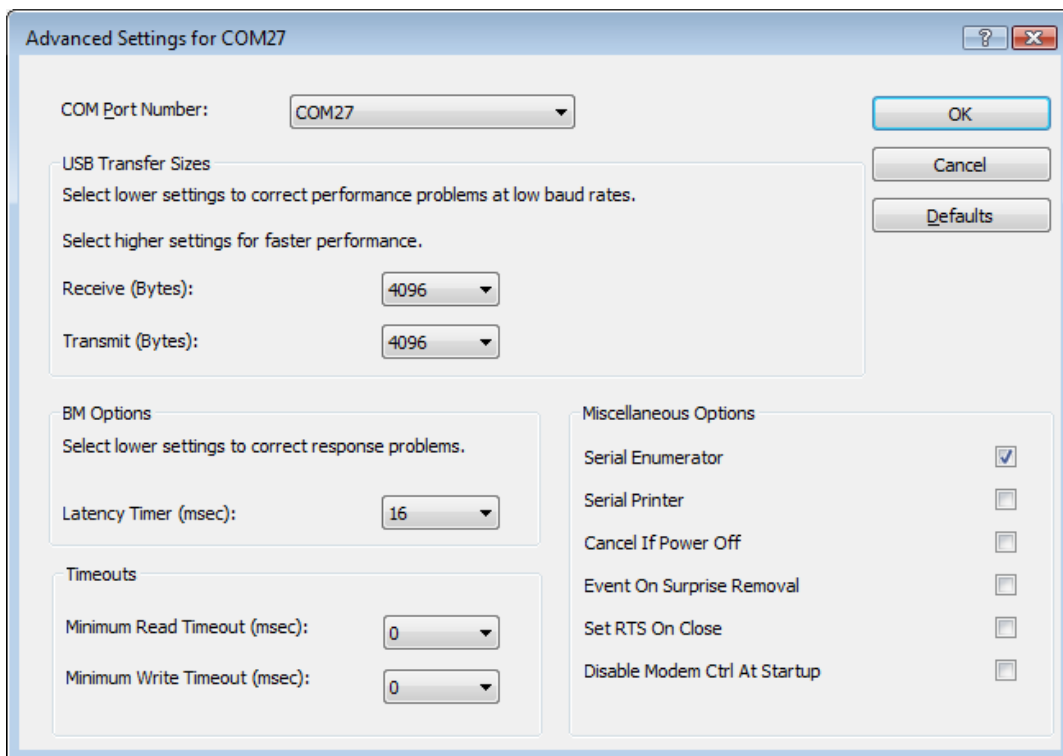
The following window will open.



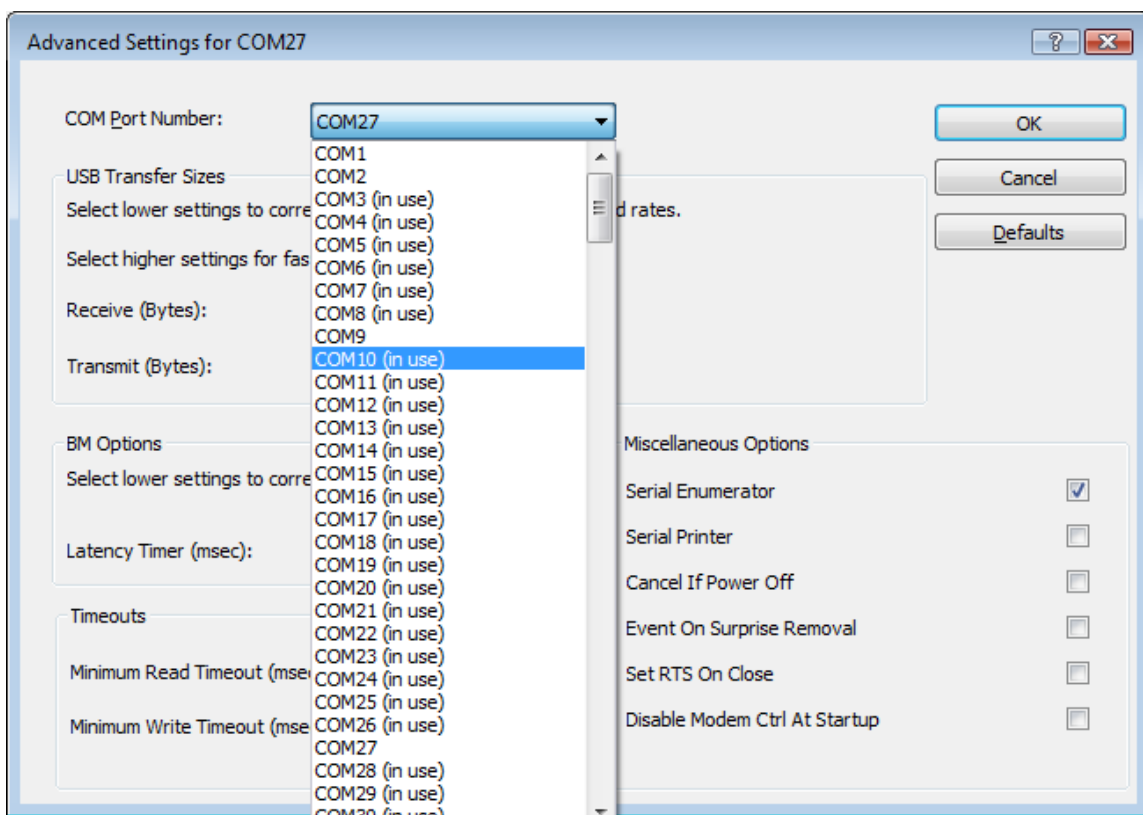
Click on 'Port Settings' tab. Then click the 'Advanced...' button.



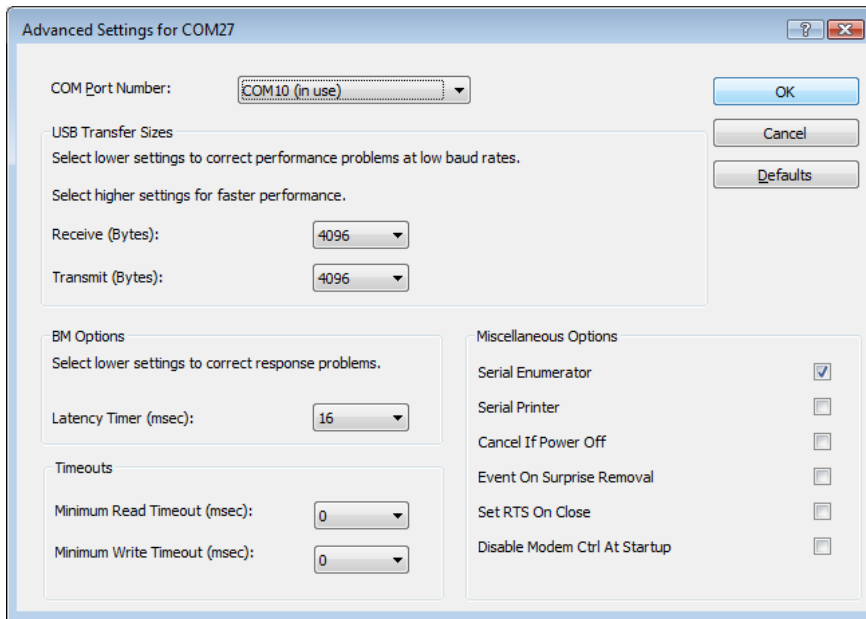
The window below will open.



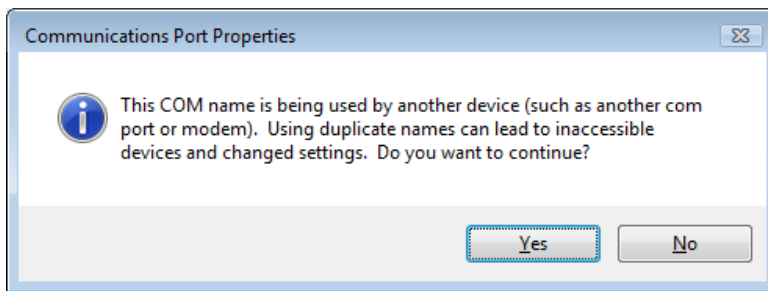
Click the arrow next to your COM Port Number and select a Com Port below 15 and click on it.



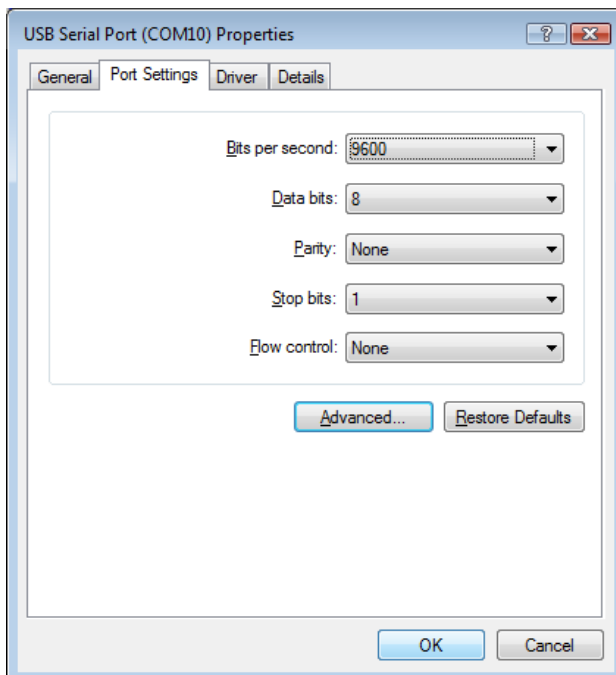
Click on 'OK'.



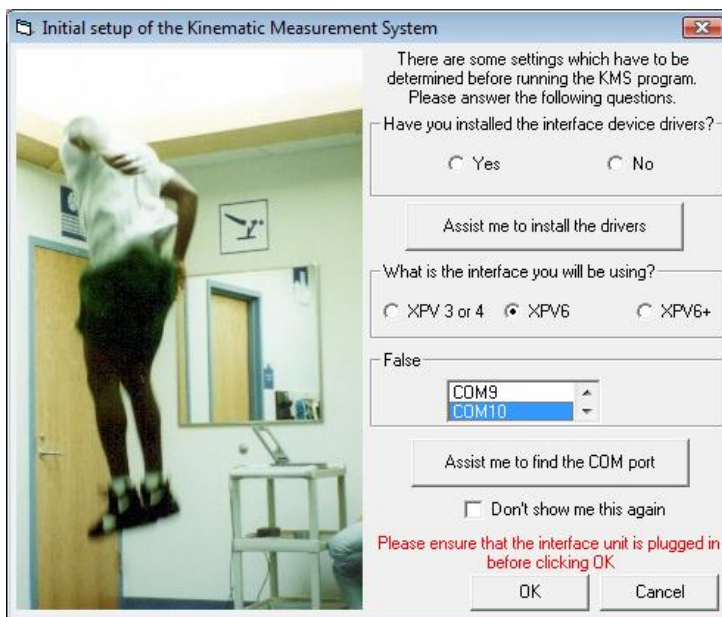
It will then show the following message. Click on Yes.



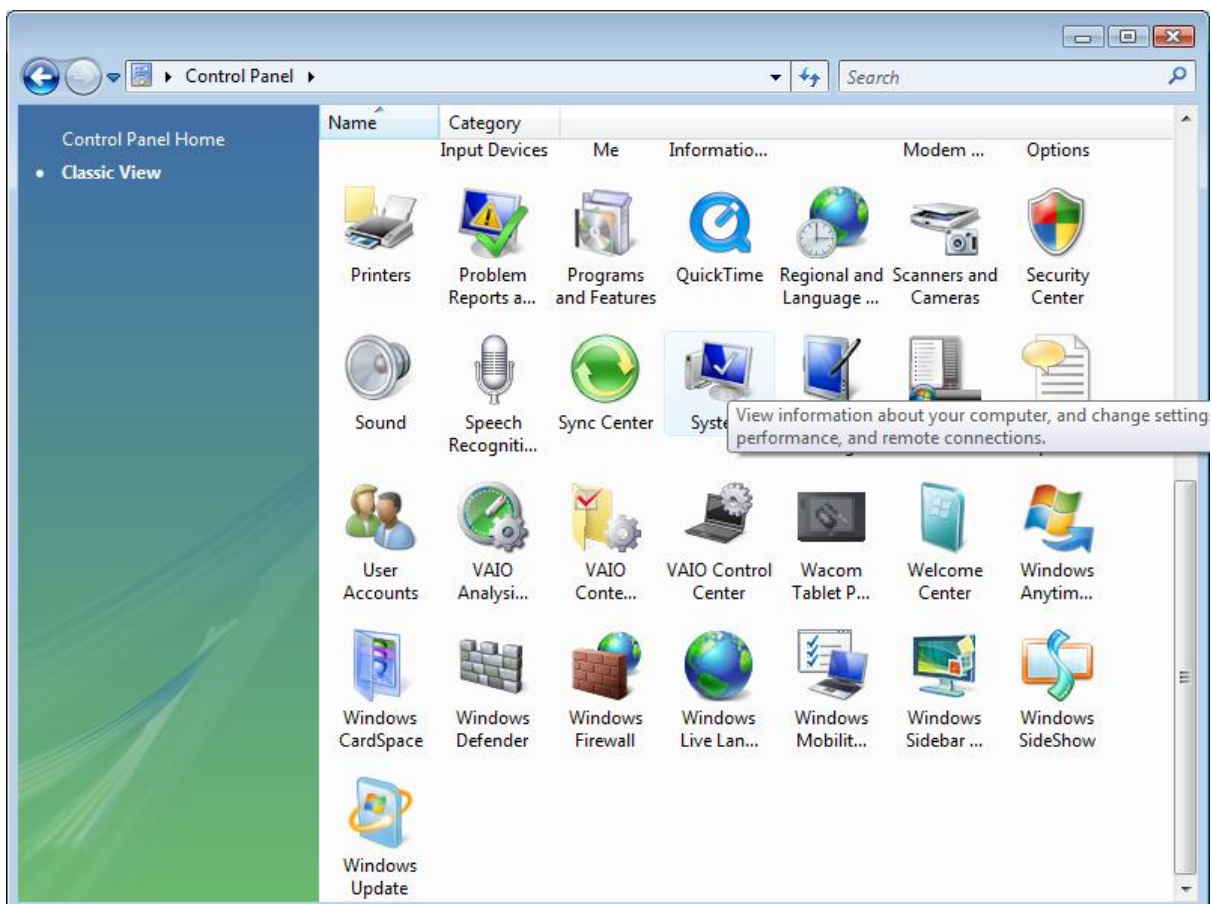
Click 'OK'.



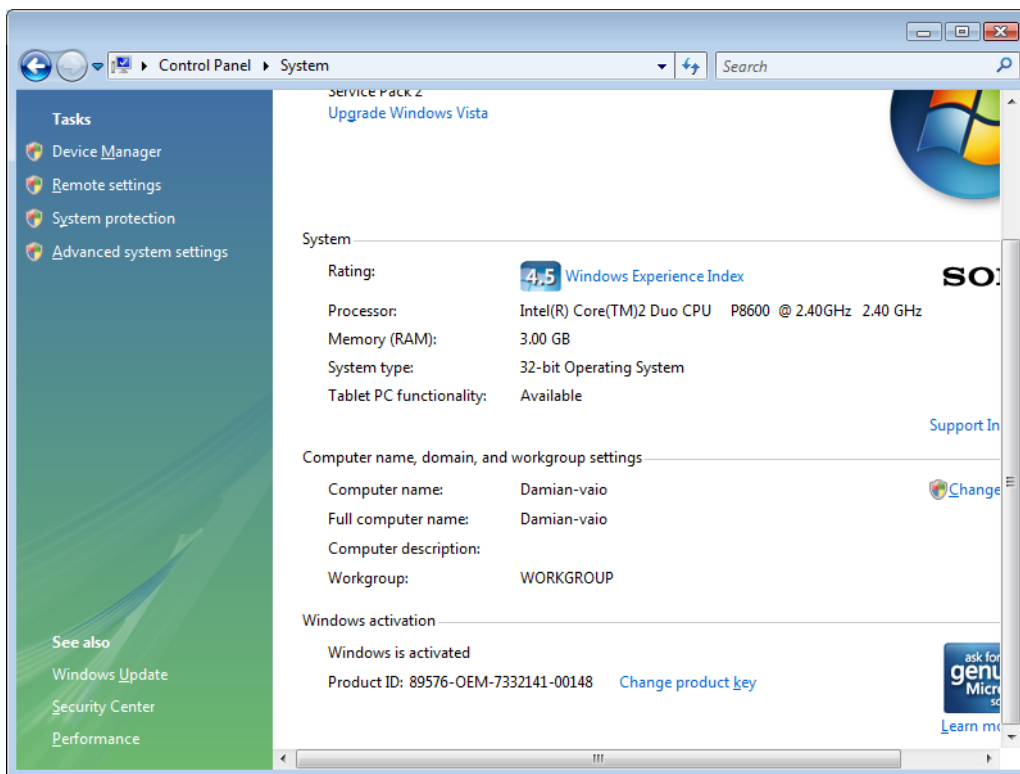
You can now select the new COM port number when you open the KMS or BMS software.



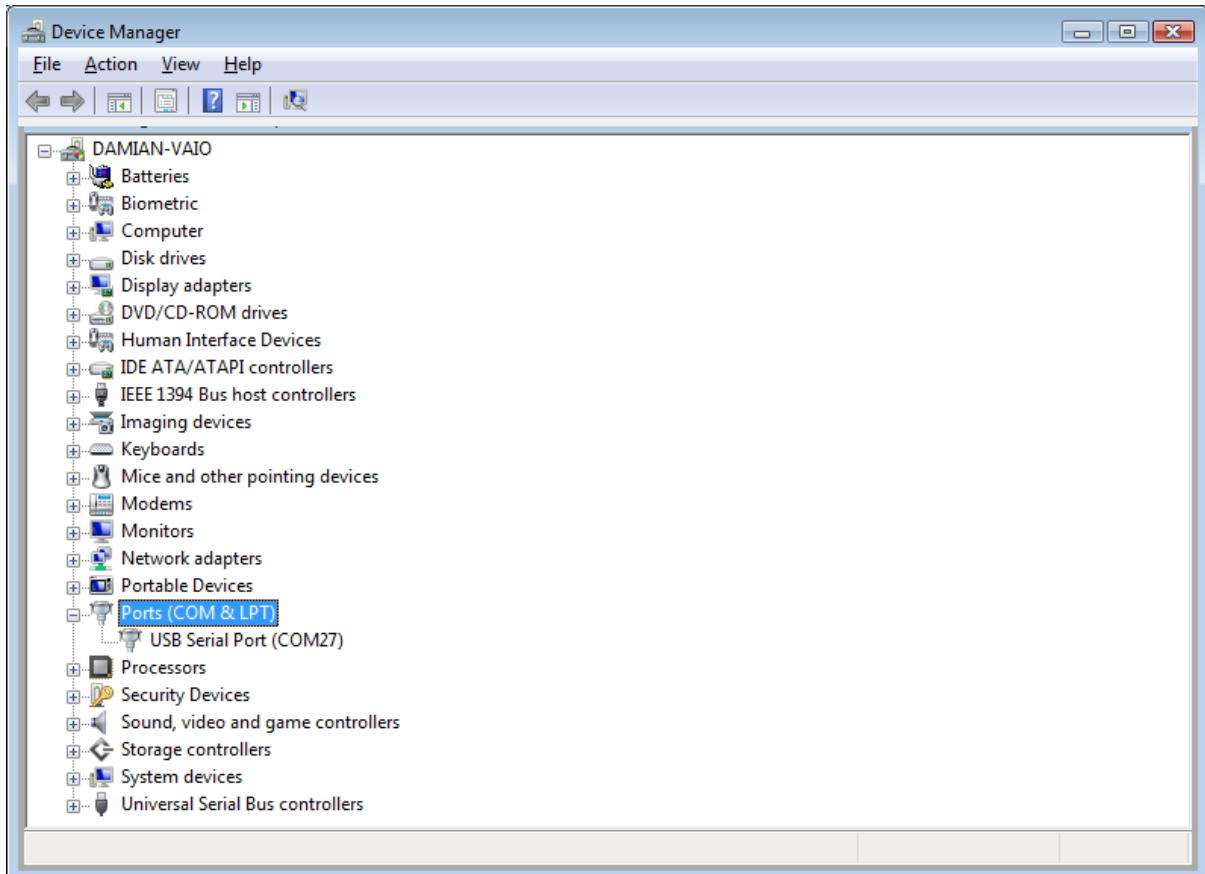
**For Windows XP users** when in 'control panel' find 'System' and double click on it.



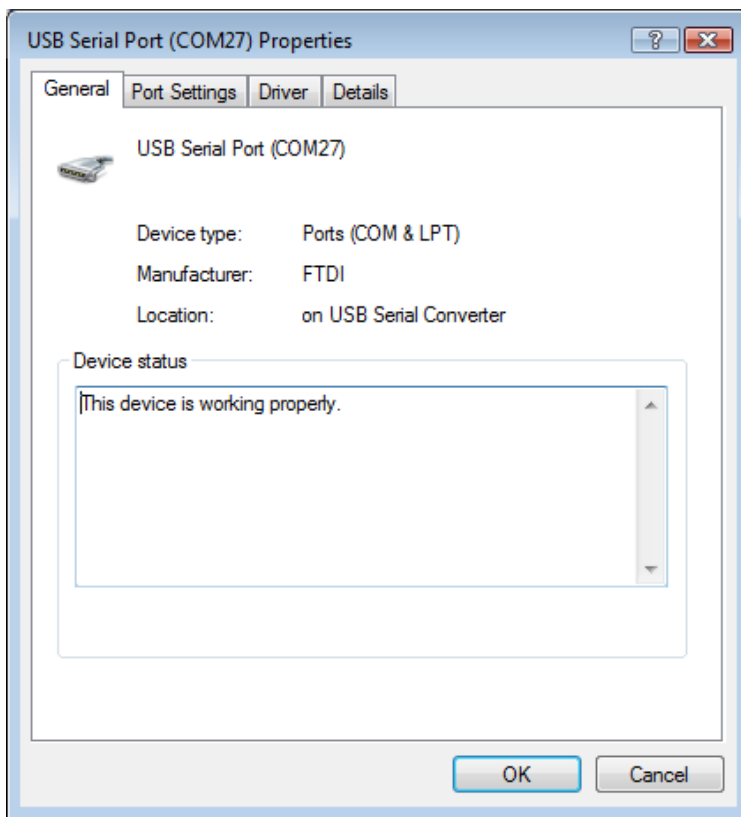
Then click on 'Device Manager'.



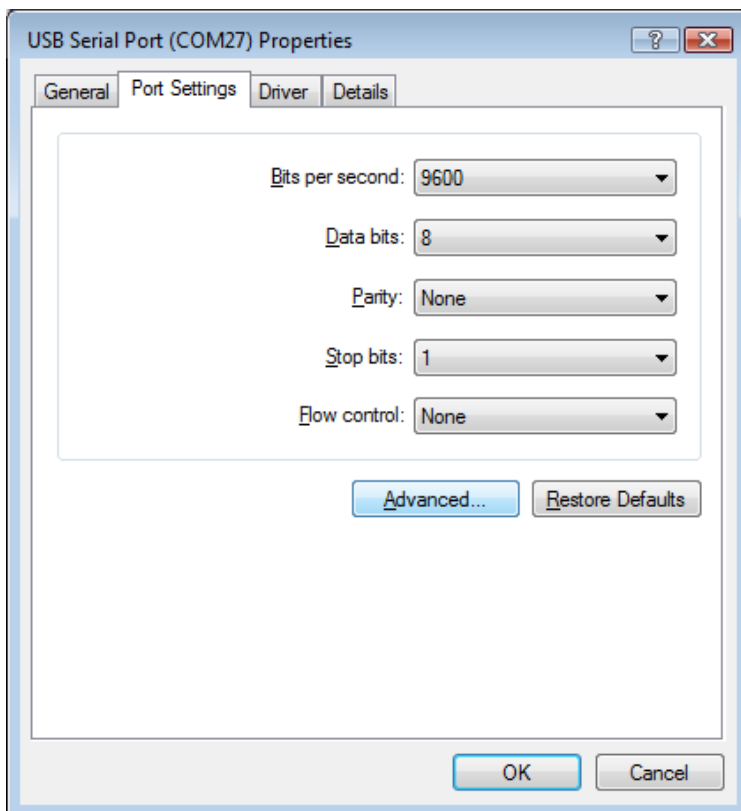
Expand 'Ports (COM & LPT)' by clicking the + symbol. Then Double Click 'USB Serial Port'



The following window will open.

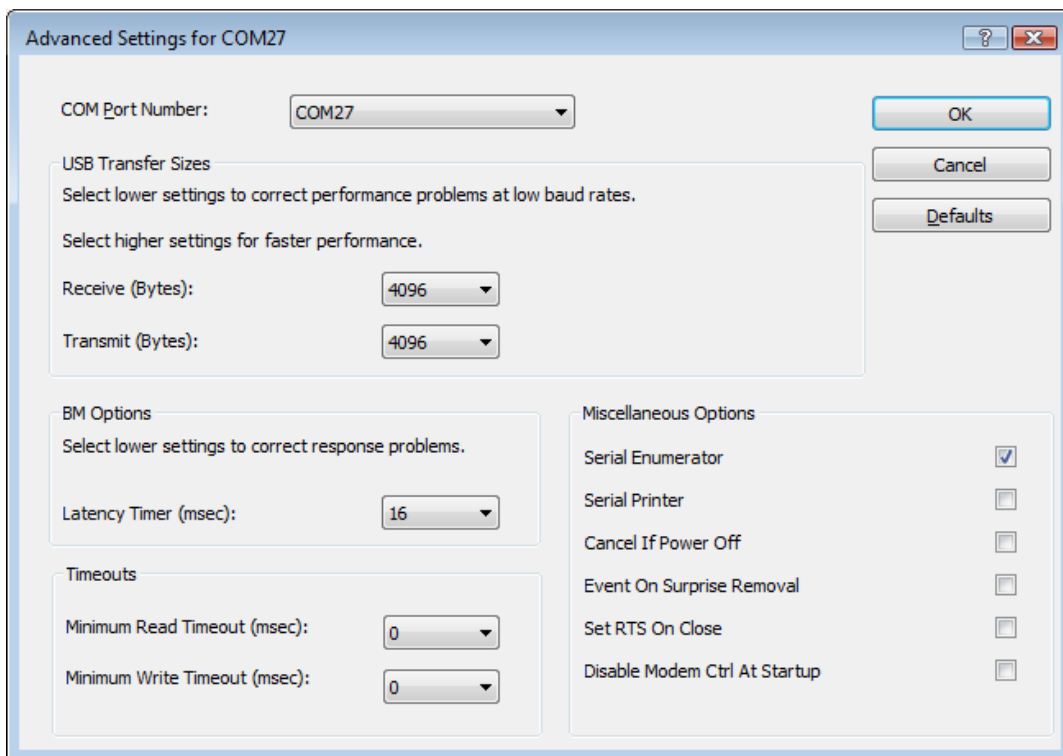


Click on 'Port Settings' tab. Then click the 'Advanced...' button.

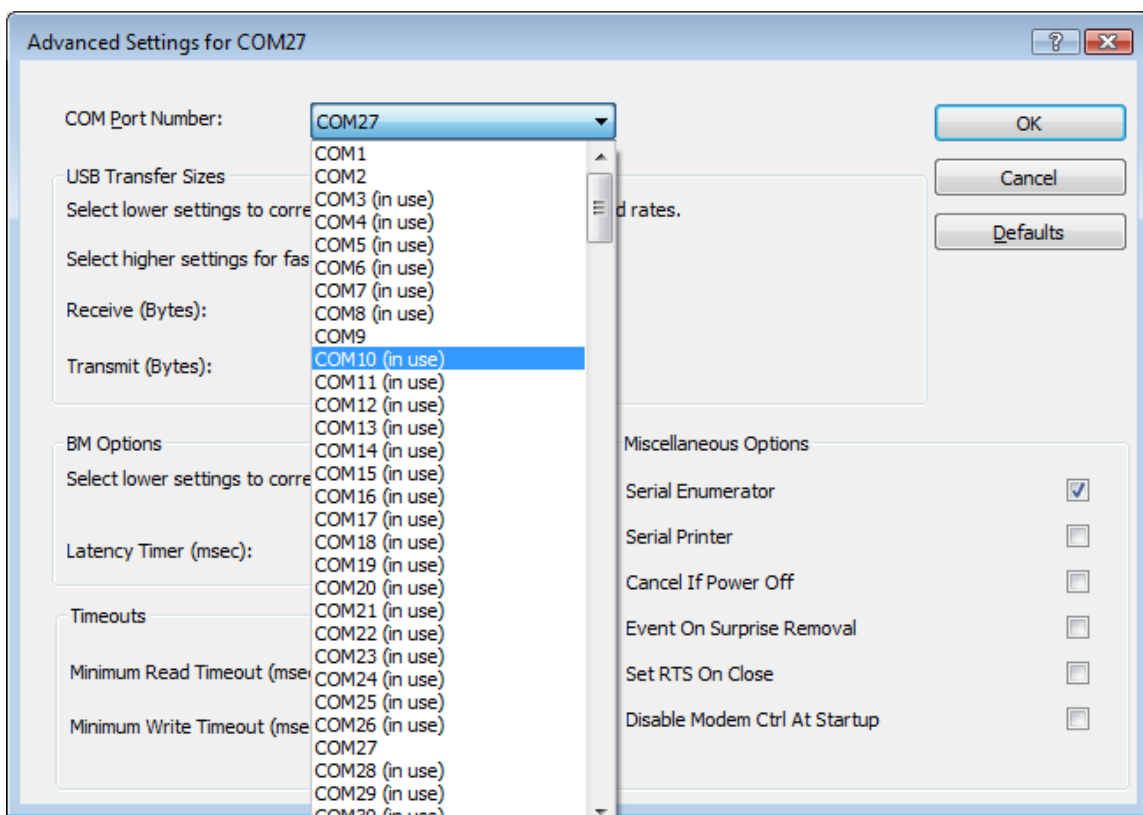




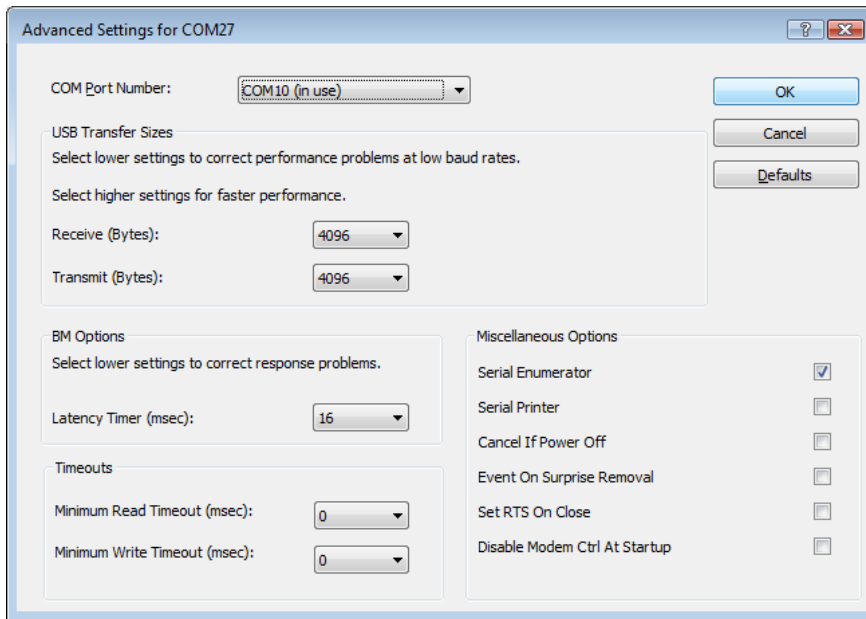
The window below will open.



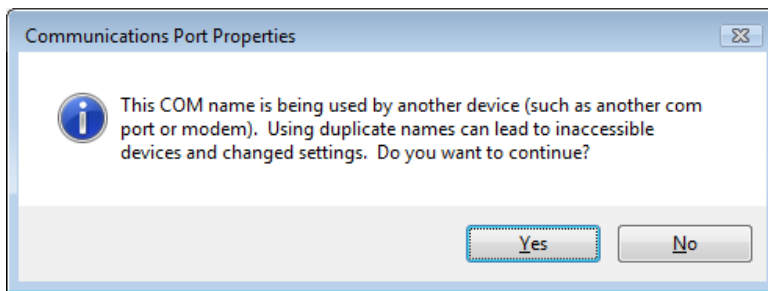
Click the arrow next to your COM Port Number and select a Com Port below 15 and click on it.



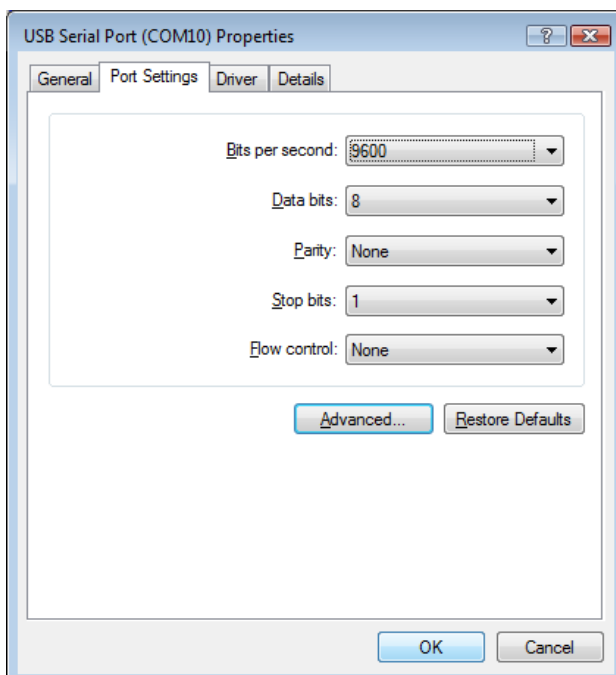
Click on 'OK'.



It will then show the following message. Click on 'Yes'.



Click 'OK'.



You can now select the new COM port number when you open the KMS or BMS software.

