

Fitness *Technology*

Performance Measurement, Training and Rehabilitation Equipment

How to Changeover the PCB in the XPV6+ Interface.

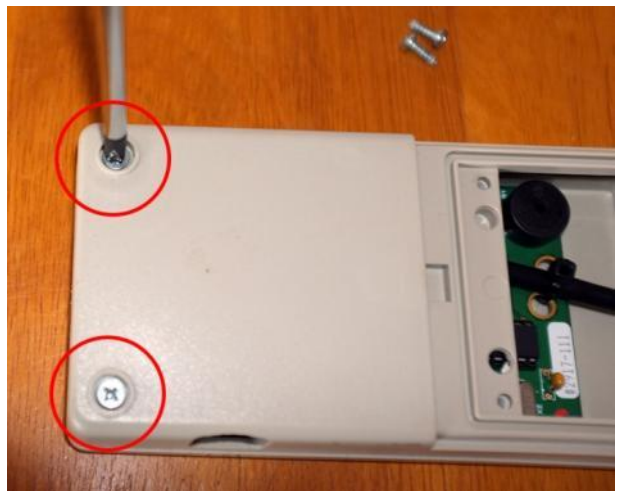
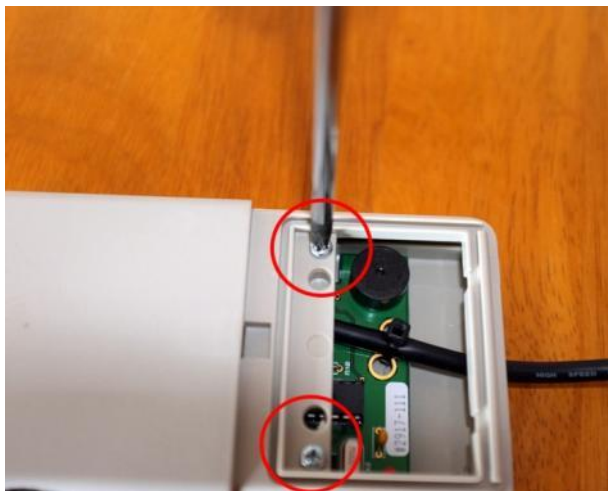
Start by turning over the XPV6+ interface so that you can see the rear access panel and screws.



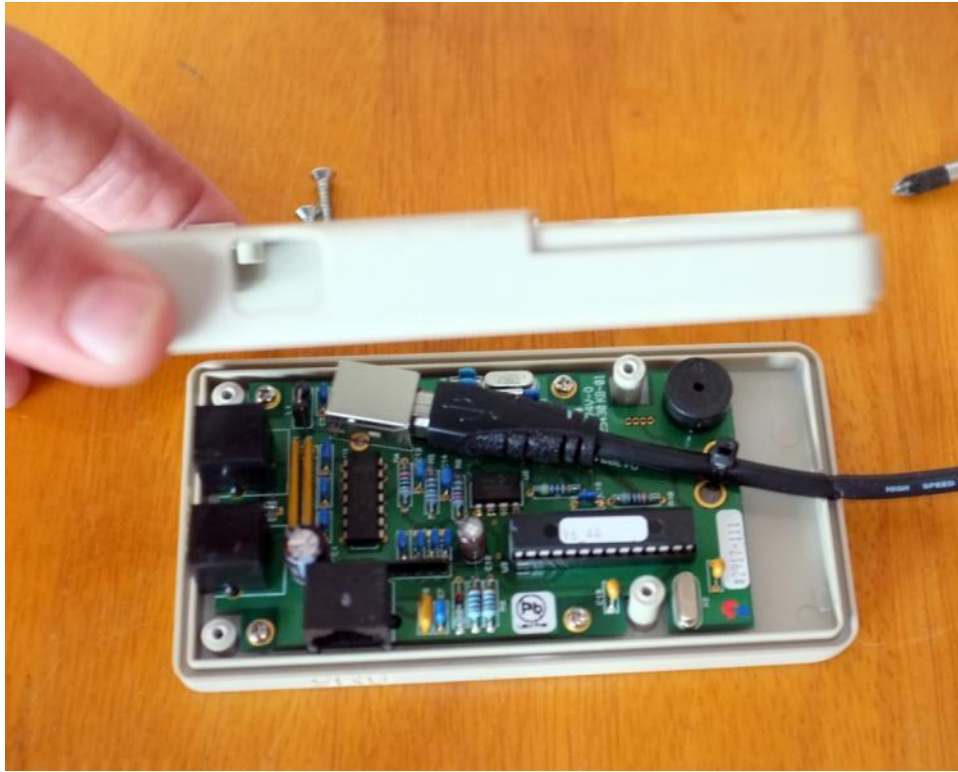
Then remove the rear access panel. You may have to remove the type and serial number information label to do this.



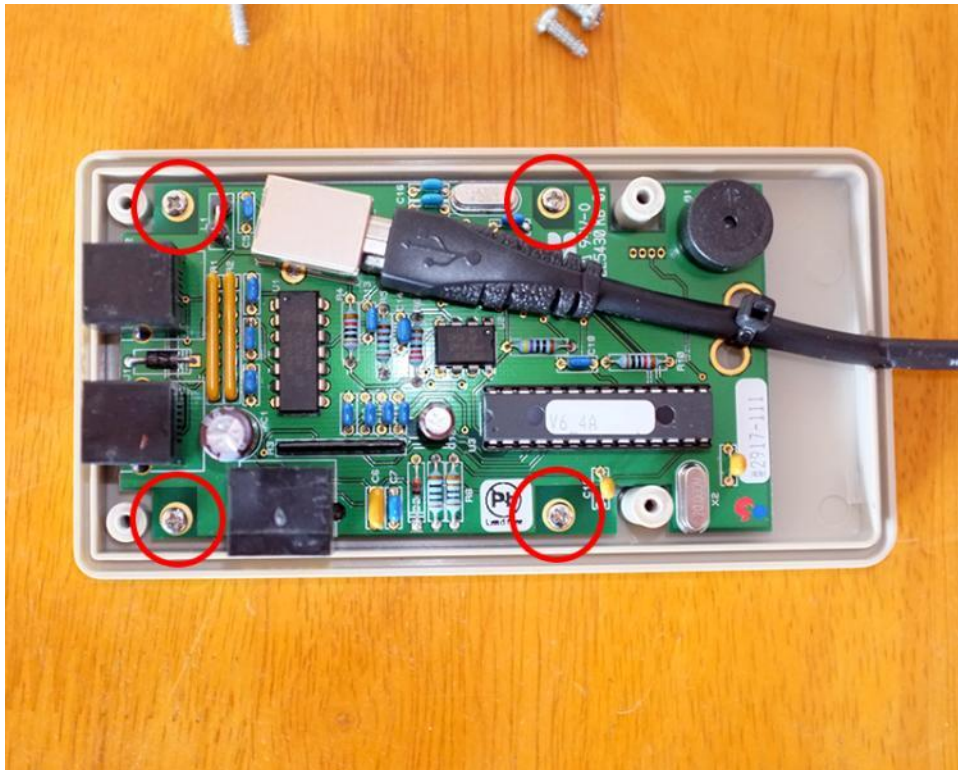
Locate the four screws holding on back of the XPV6+ and unscrew them.



Once they are unscrewed remove the back of the XPV6+.



Locate the four screws that secure the PCB.



Unscrew the PCB screws.



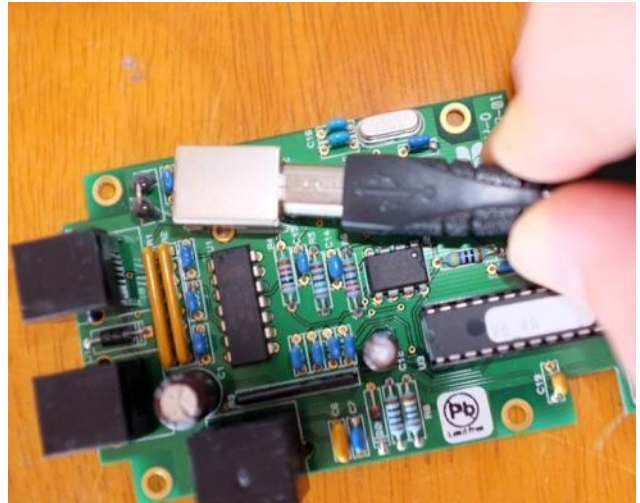
Cut the cable tie that holds the USB lead in place.



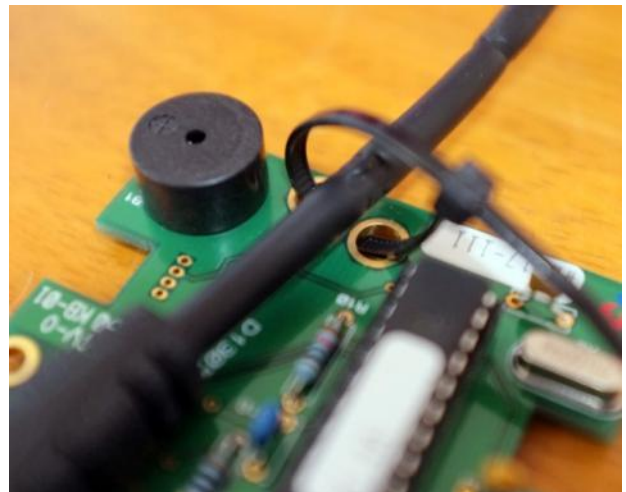
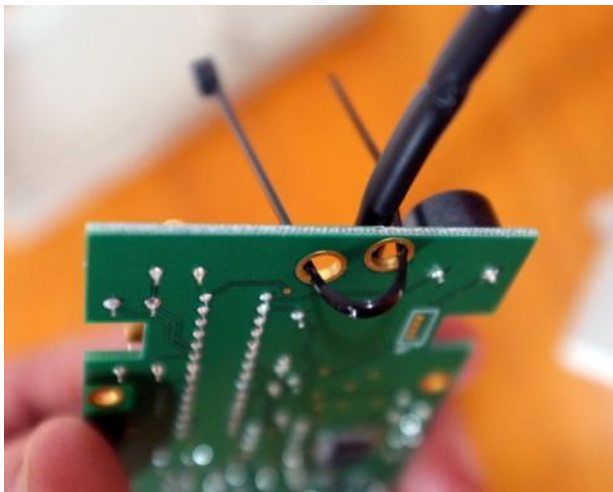
Unplug the USB lead.



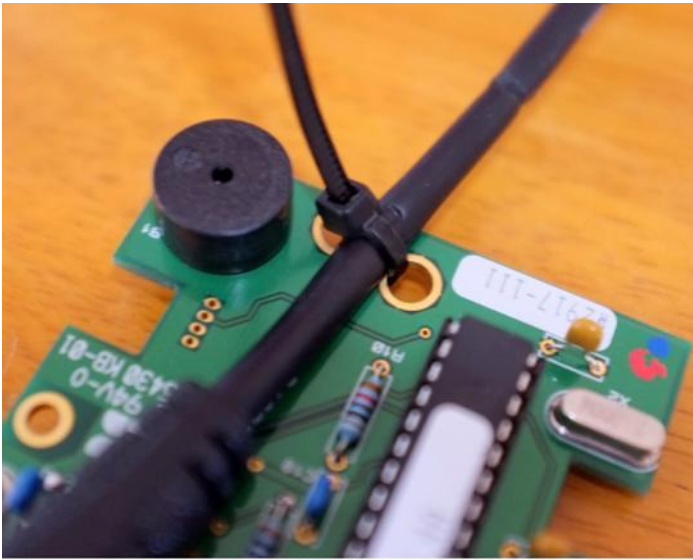
Get your replacement PCB. Then plug in the USB cable.



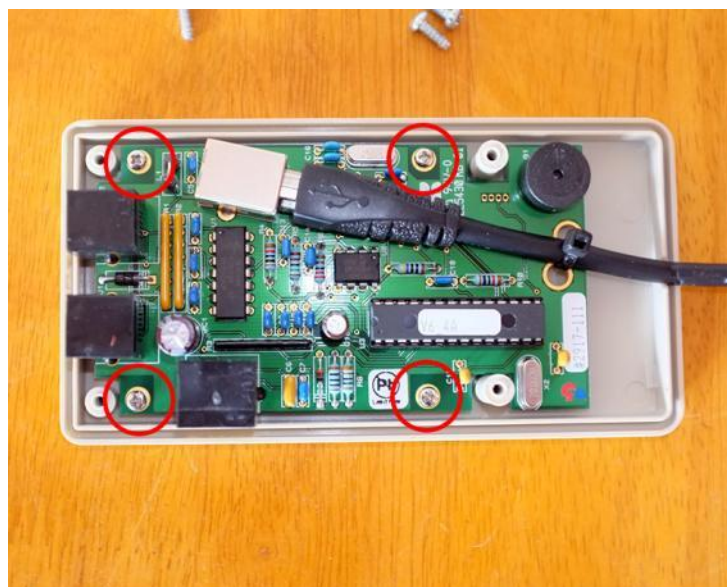
Position the cable tie through the two holes in the PCB around the USB lead.



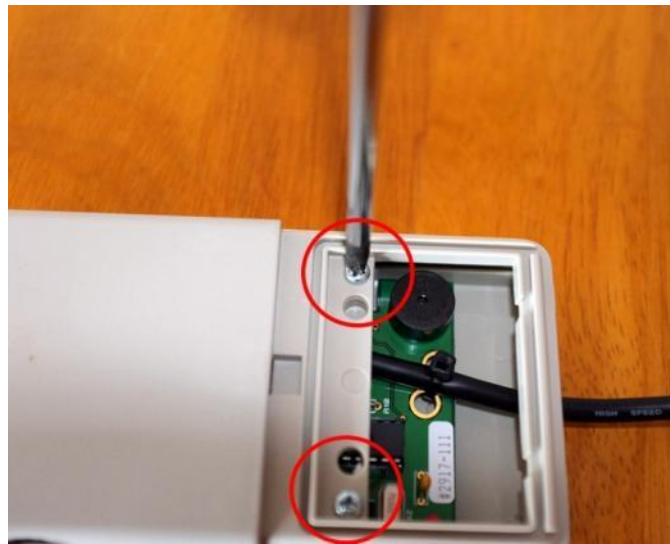
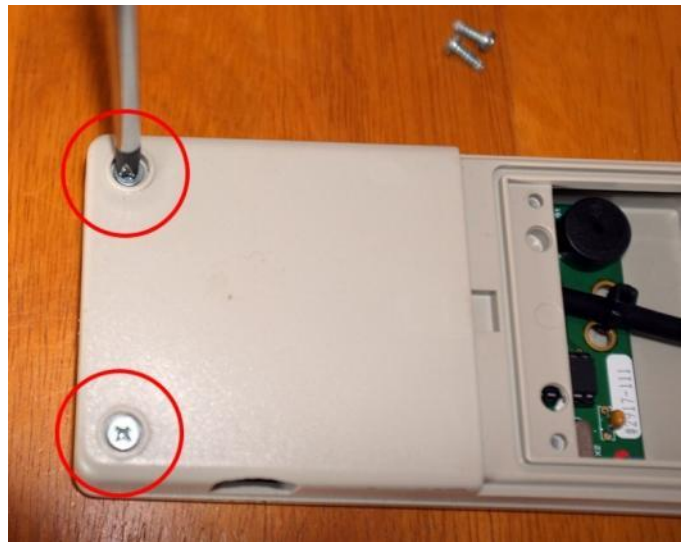
Tighten the cable tie and clip of the excess.



Place the PCB back into the XPV6+ case and replace the four screws that secure it in place.



Replace the back cover of the XPV6+ case and screw back together.



Replace the rear access cover by sliding it back in place.



You can now retest your XPV6+ by plugging the USB into your pc and starting the KMS or BMS software and ensuring that it is recognised by the software.