



FT700 Shipment Details

Carton 1 / 3 on skid

MBU, LPT, Tracking Cradle & PC shelf 146cm L x 75cm W x 56cm H+ all Electronics components with connections & fasteners Gross Wt 88 Kg

Carton 2 / 3 on skid

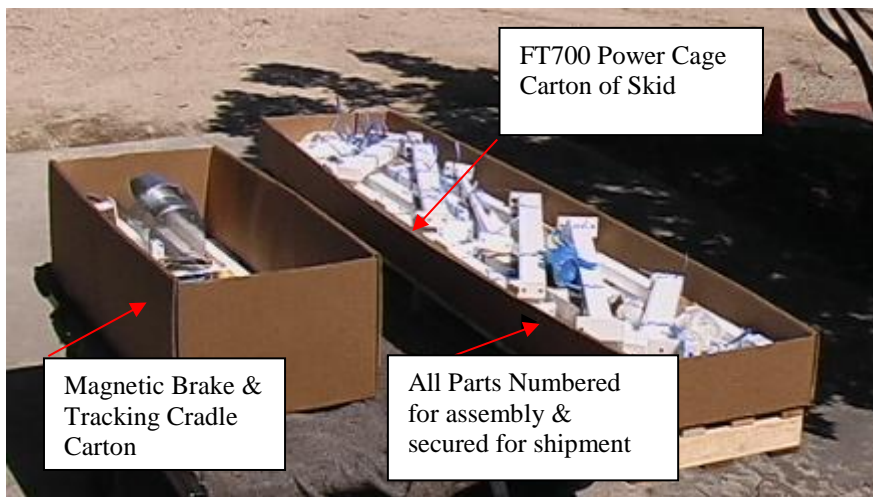
FT700 Power Cage 314cm L x 70cm W x 35cm H with Internal Bar Hooks & Safety Bar attachments Gross Wt 223 Kg

Carton 3 / 3 on skid

1 x 400S Force Plate with internal work area platform (with 400S well)

116cm L x 113cm W x 38cm H 75 Kg

Total Packaged Gross Weight 1 + 2 + 3 = 2.37 CM Total Gross Wt 386 Kg



Packaged & ready to be shipped anywhere

