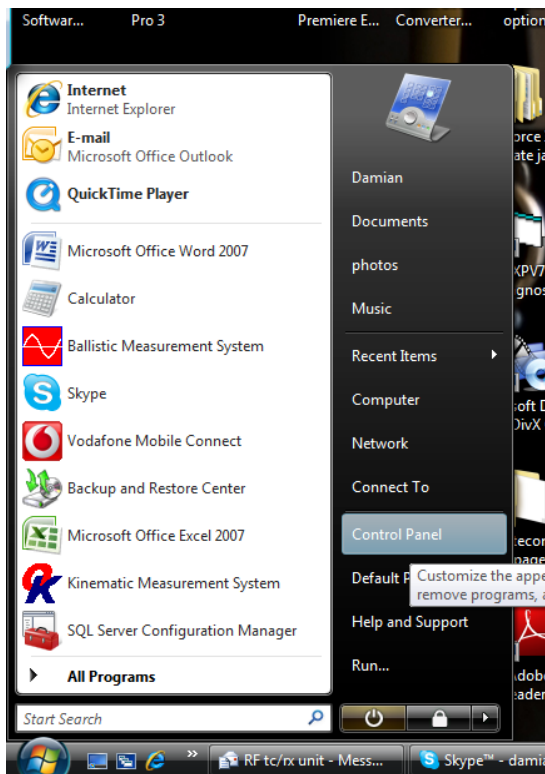
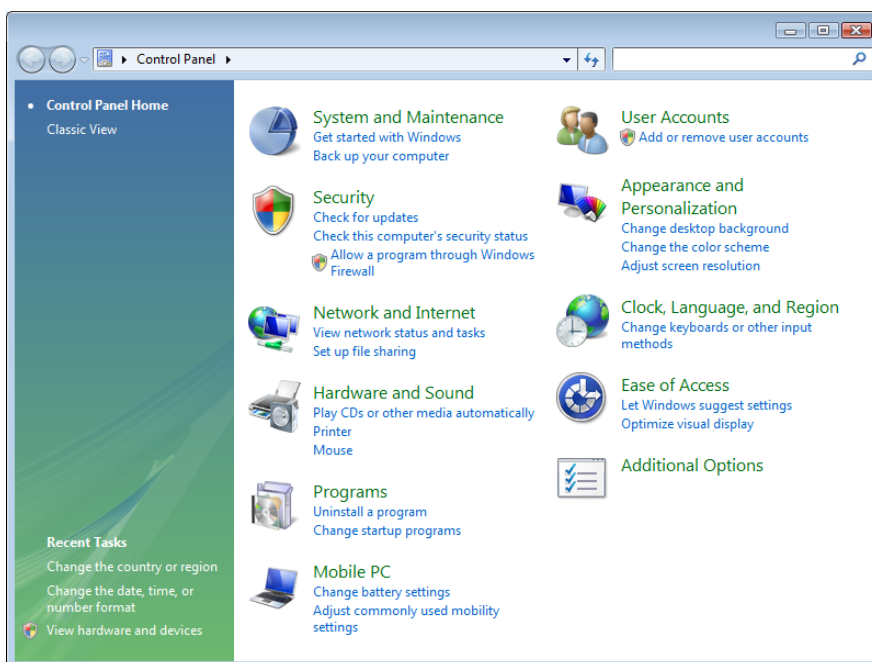


Setting the Language Options to English for Correct Operation of Fitness Technology Software.

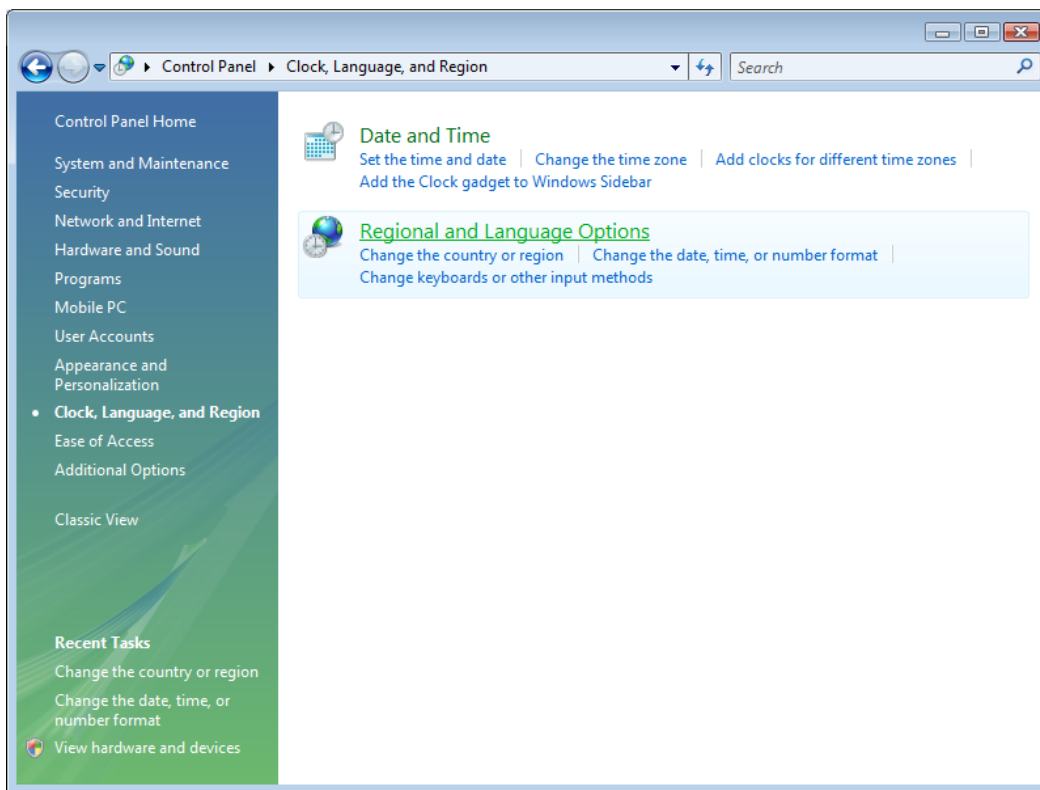
Go to Start/Control Panel



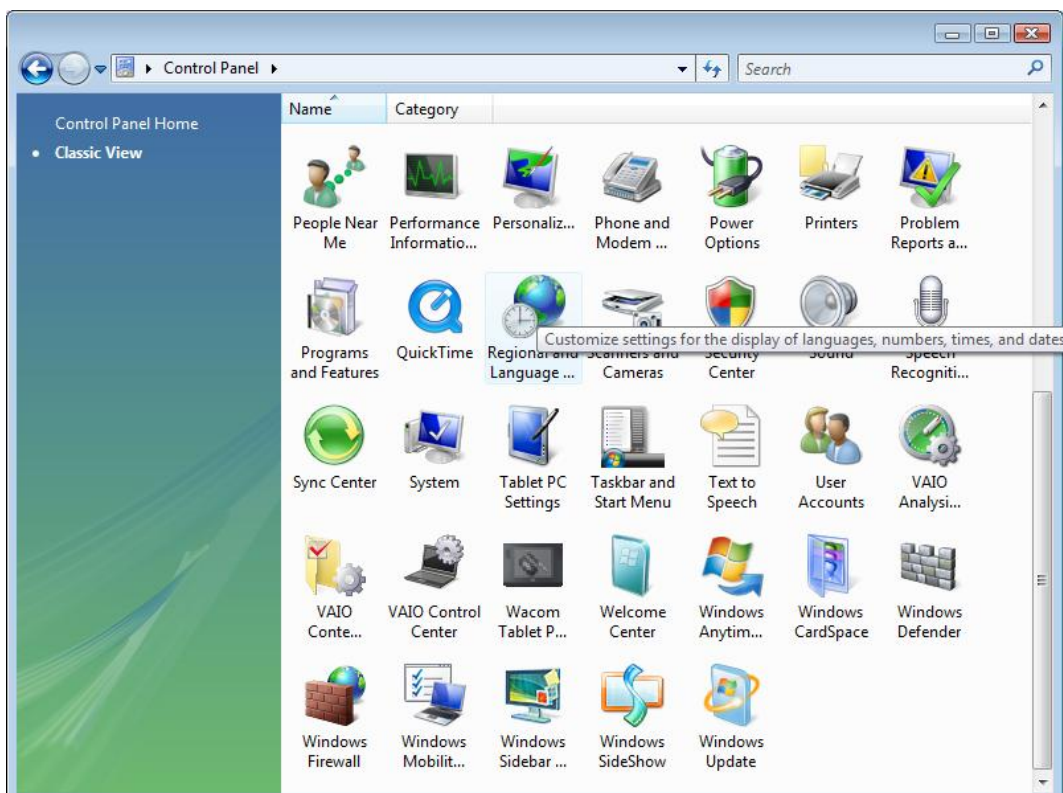
Select 'Clock, Language and Region' on Newer Operating Systems (Windows 7, Vista).



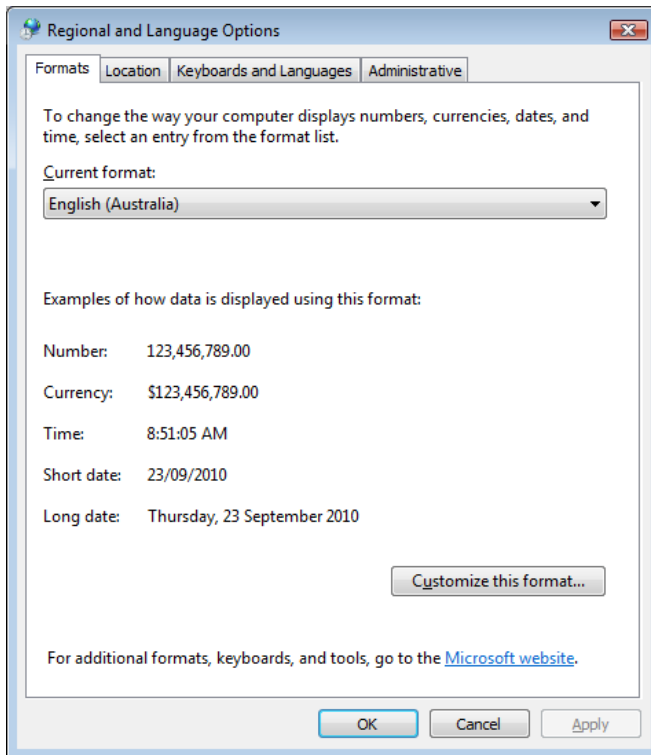
Then 'Regional and Language'.



Or 'Regional and Language' in Classic View or older operating systems (XP).

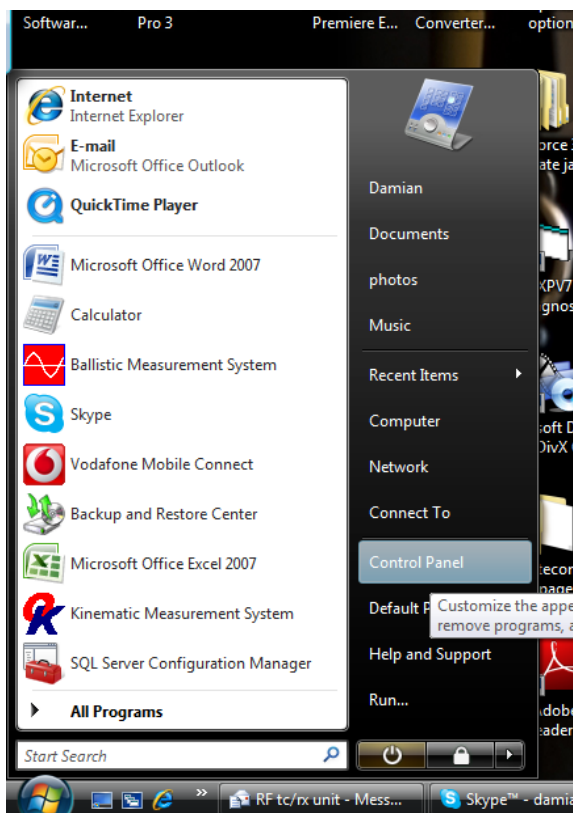


In the regional and language options window set 'Current Format' to any of the English options.

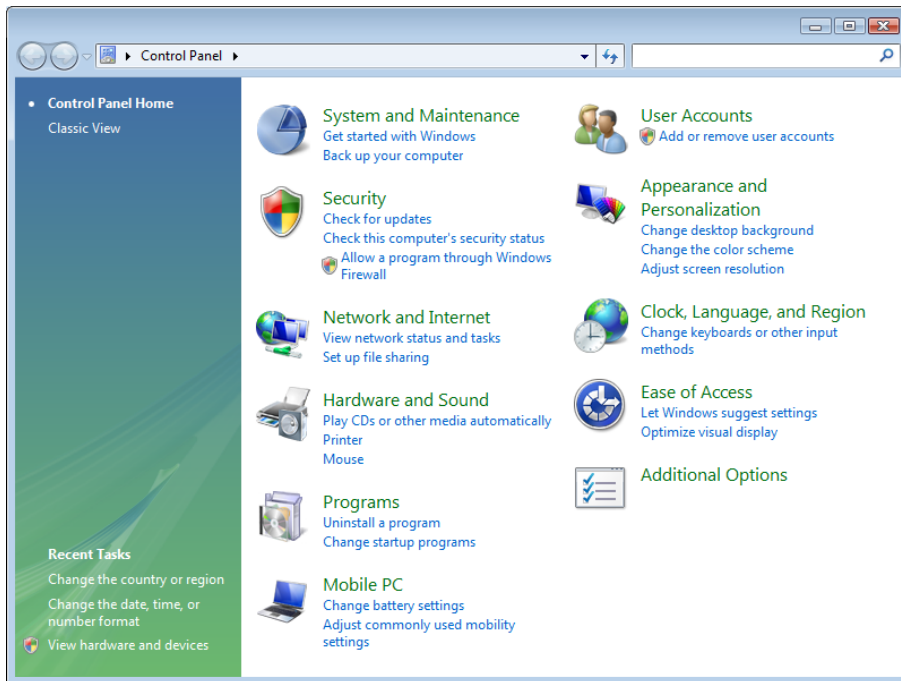


If the software does not run properly after this step Follow the instructions detailed below.

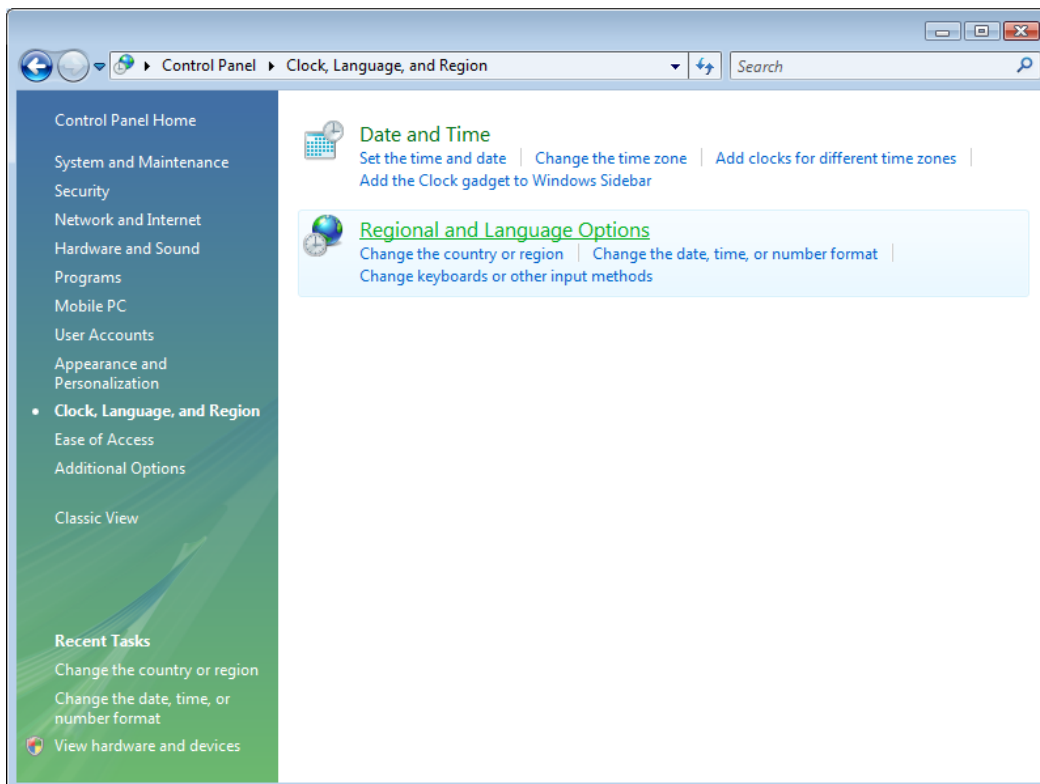
Go to Start/Control Panel



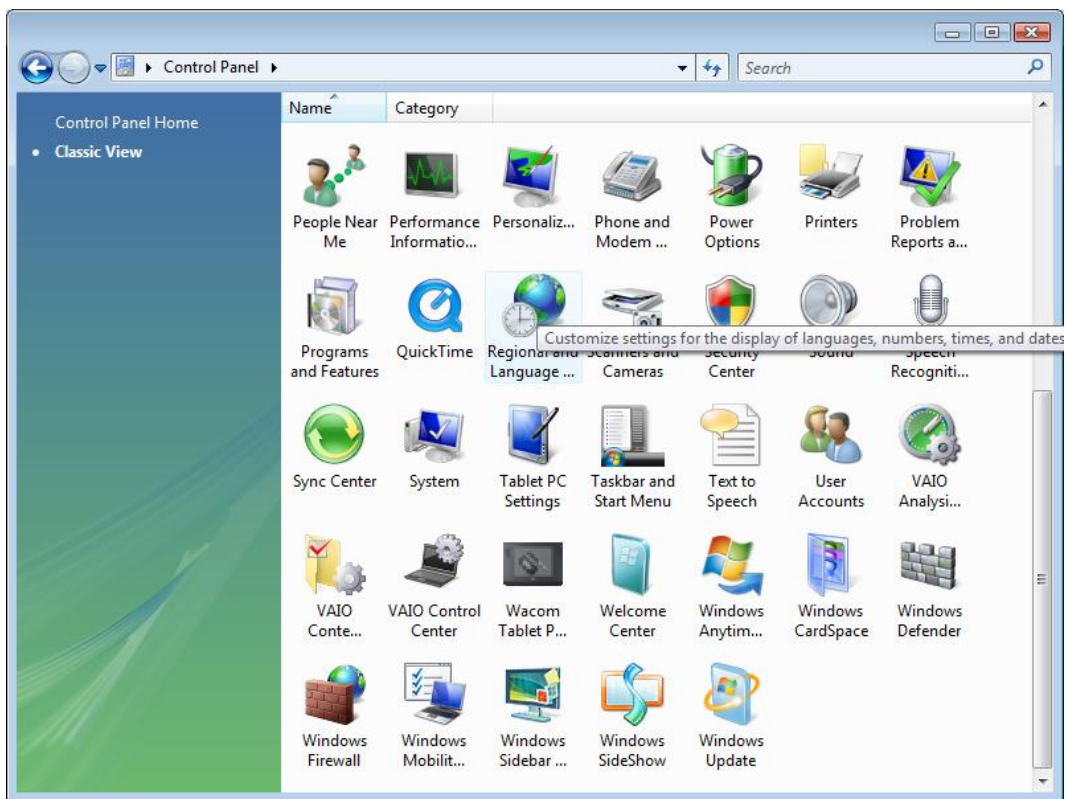
Select 'Clock, Language and Region' on Newer Operating Systems (Windows 7, Vista).



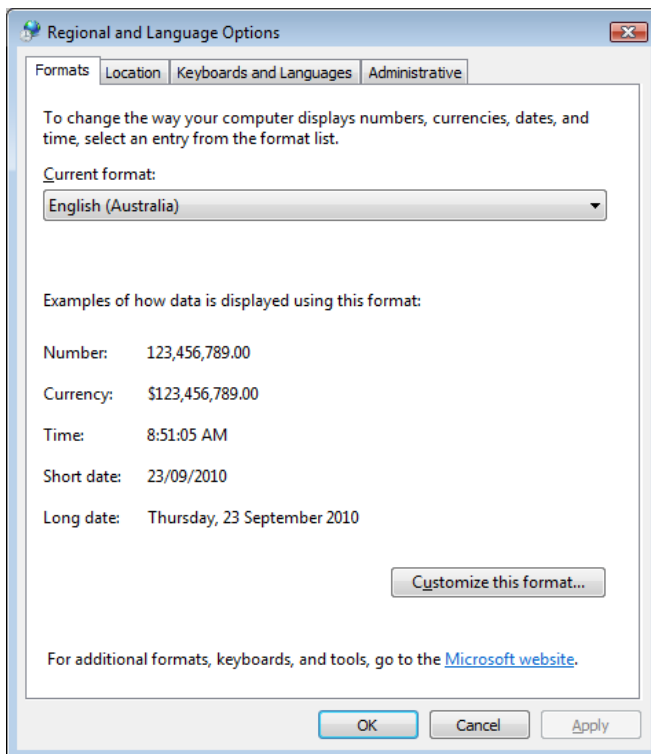
Then 'Regional and Language'.



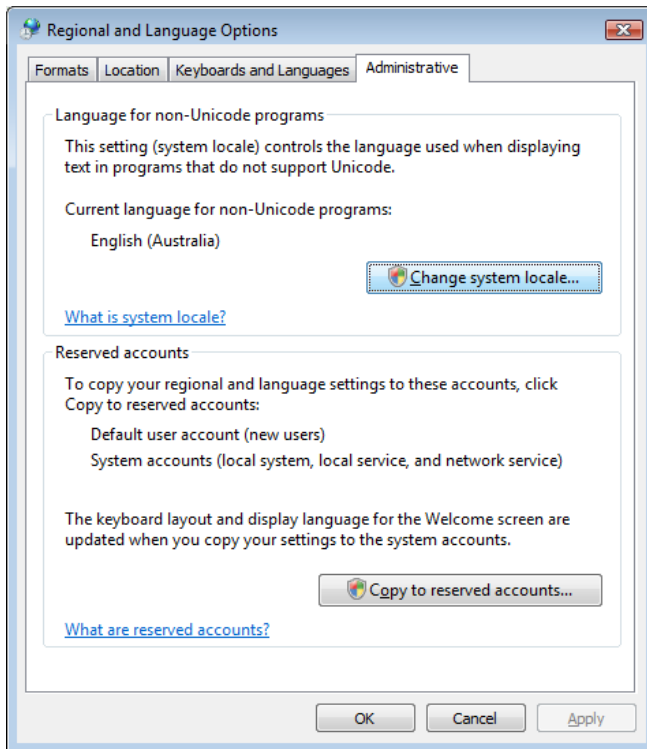
Or 'Regional and Language' in Classic View or older operating systems(XP).



In the regional and language options window click on the administrative tab.

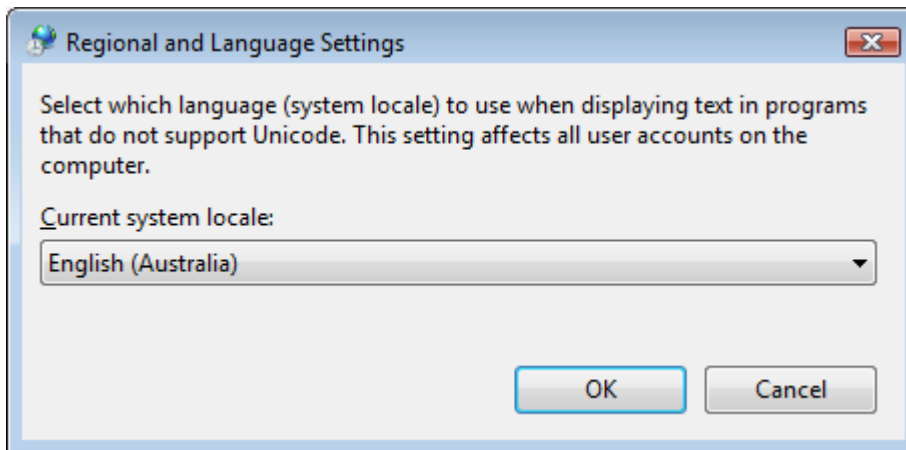


Click on 'Change system locale...'



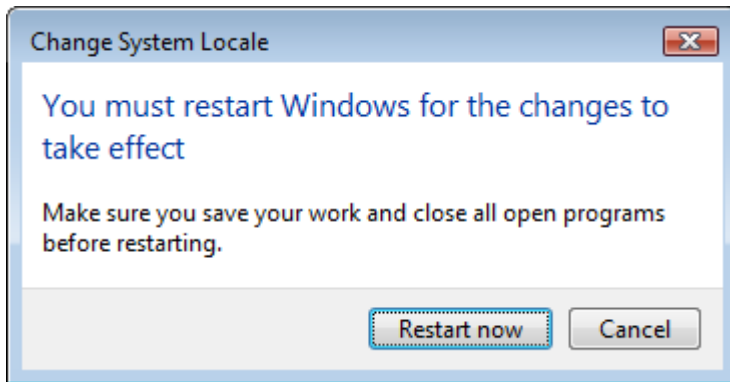
You may need a password from your IT department depending on how the PC is setup.

Select 'English (Australia)'



You will then be asked to restart your PC.

Click 'Restart Now'



When the PC has rebooted you can simply start the BMS software and conduct your tests.

When you have finished testing you can return the system to 'Japanese Language' settings by following the same procedure.